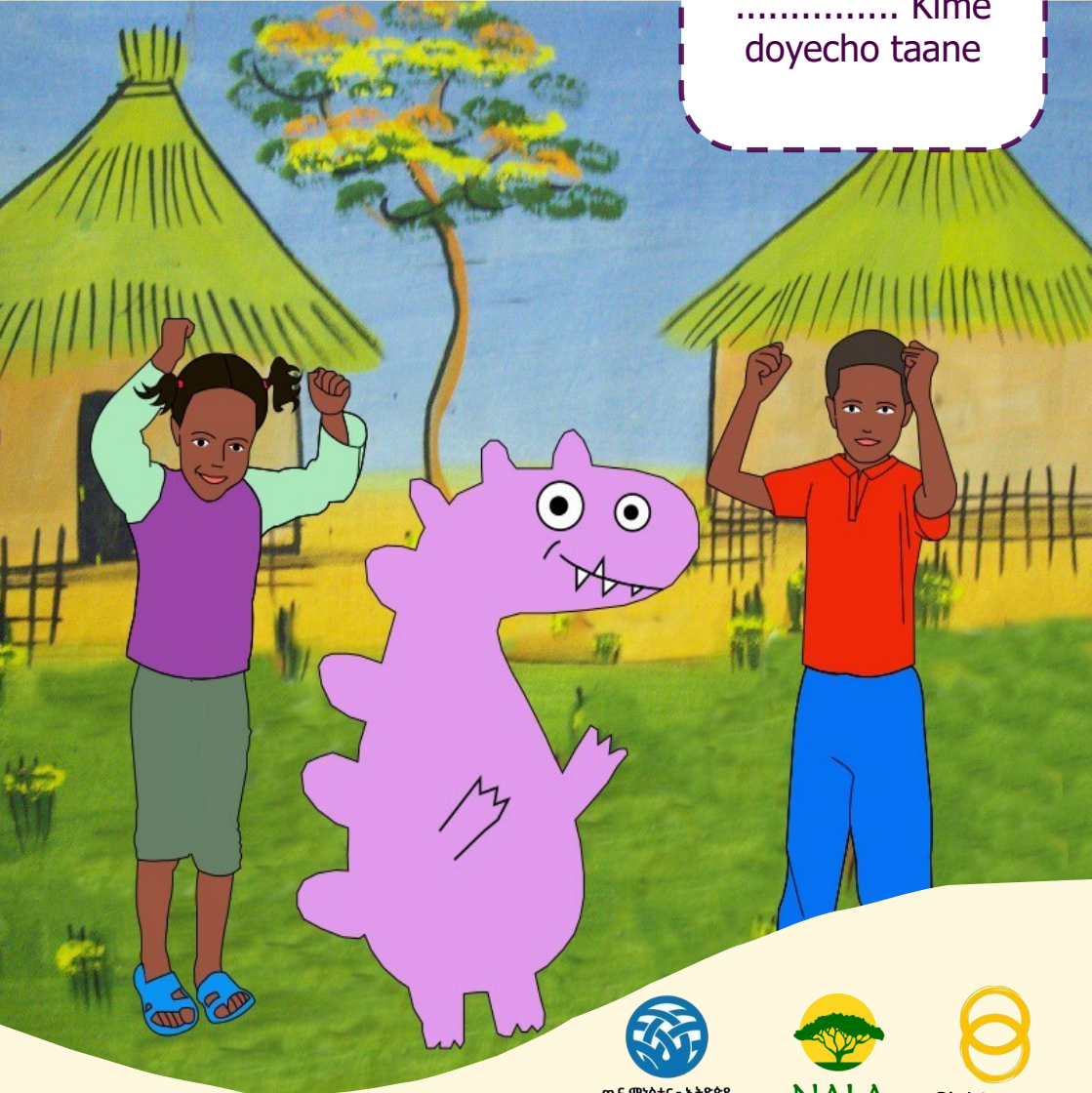




Jiwee Nuuchitine Kiine Korico

Ta Shigo
..... gettehe
..... Kime
doyecho taane



ጤና ሚኒስቴር - ኢትዮጵያ
MINISTRY OF HEALTH-ETHIOPIA



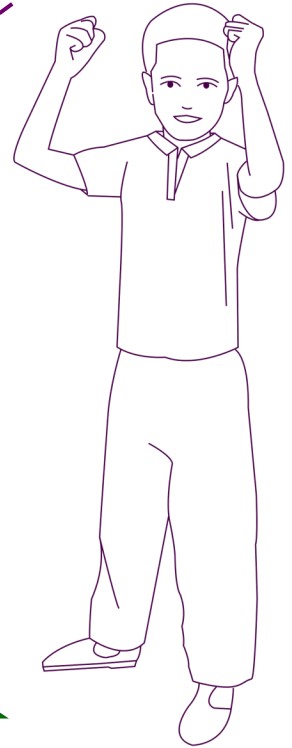
NALA



Sightsavers

_____ Kittamitte daqqochi ta qaabe
manoona _____ ta guuche maneena
beeteete boobi gettebeeti nuuchoo boonoshichi
beete.

No nuuchoo _____ boobi
ooge irittochi giite no ubbe
gooroon biini dego qaawiyon



Doyechina'ochi boobi bi nuuchena'ochi amo
geteiyee? Doyechina'ochi boobi tahe shichoon
hakkiye. Ebiye baro damiba shicheeti. Manoona
maneena qaxero huute beete.



Ubbe aabon maadi maadon qaabee mano tokketoche shiichi tihe.bi kishoona aafoononi saamunoona aacona machehe.bi guche manee bi kishoona aafooni bi machemmochi booyehe.

Doyechina'ochi ne qaabe mano ne tunooni arichibe kishona aafe xallitine guye hama-dabboni halloona bi kishoona aafooni aabichi bi machemmo gaata ne guche manechi bekkib

Itto kishona aafoononi aabichi'I machoote?



1. Kishoni aacona shuxxiyo



2. Uumibo kechaaha beddaha kishon saamunoona yoppho



3. Ikke baddi kiske madon bare baddi kiske madona yoppho



4. Ikke baddi kiske yafero bare baddi kiske yaferere maaci giijji yoppho



5. Aafon machoochi saamunoona macheeti kishon gaacho. Aafo no ma chemmi gooroochi ubbe kaallon no aafon yiitiyo qaawihe



6. Kishon aacona xallayo



7. Aafon aacona xallayi saamuno ubba dufon xiisho

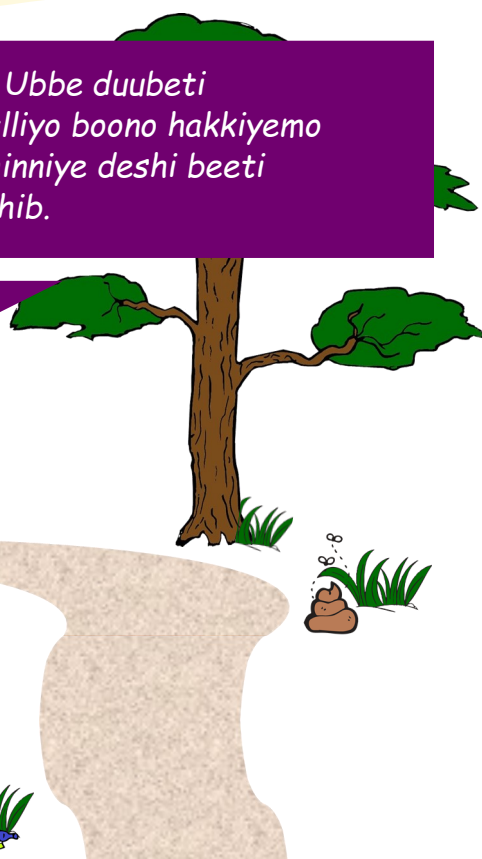
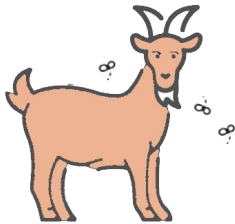


8. No kishon Ayere toommoch shuurikkona xalle cariqqon gaachoona shuukkiyo



Doye kexoch baatoona no hamemmona qaabe manooni biiye hayibo shakkiyeemi gonde jerimena'on wushochi kishona aafononi macho qaawimo tunooni bi guuche manechi biriyo. Jerimena;o guude toomochi daneheete

Doyechina'ochi 1) Maneena manoonoi Ubbe duubeti kitamitoche ikkoche kici jerimoon aalliyo boono hakkiyemo tuni boono giyemmochi gaachebi 2) hinniye deshi beeti saanduqqochi xalle doye kexoon shichib.

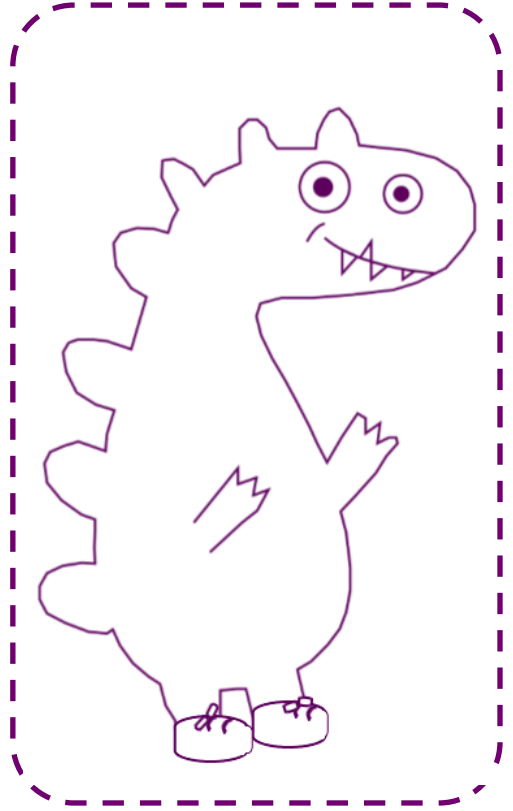


qaabe maneena manoonna doye kexoochi shaggimmona nuuchena'o boobon ciiniyete aafu ceellete halla biiyeebeete.

Biiyeti boobi



iiwe boobi

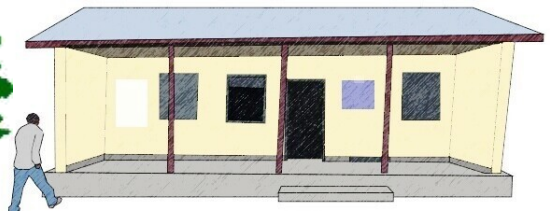
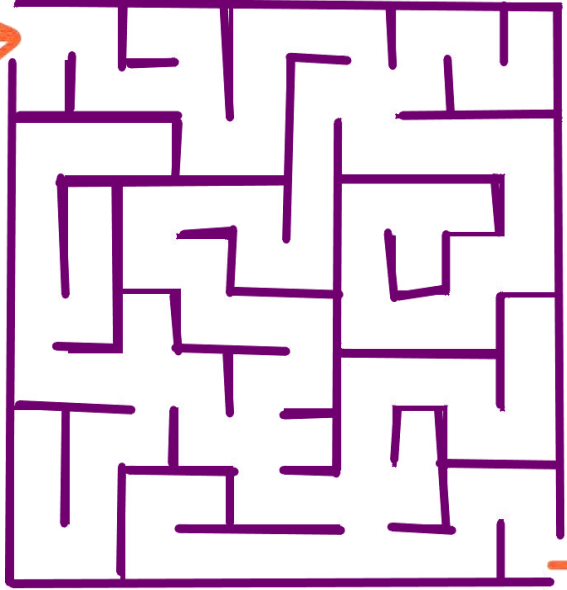


Doyechina'ochi yooche badda biiyeebeeti boobi beete qanne badda wottta Iiwe boobi guute shiche daggochi beeti Ubbe baritinooni genge maaci geddo hakkiyoote?



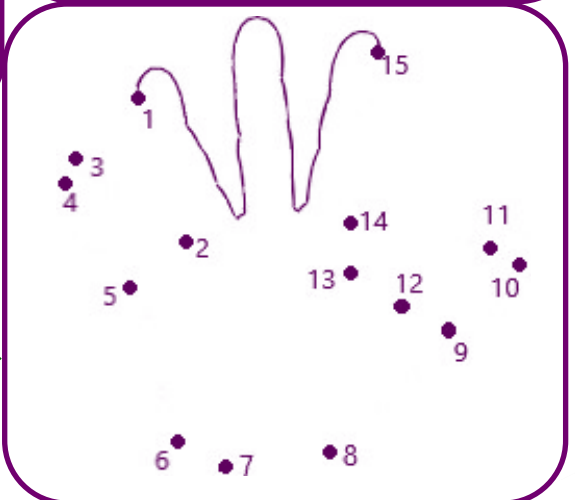
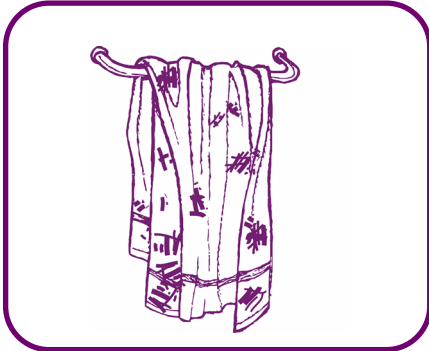
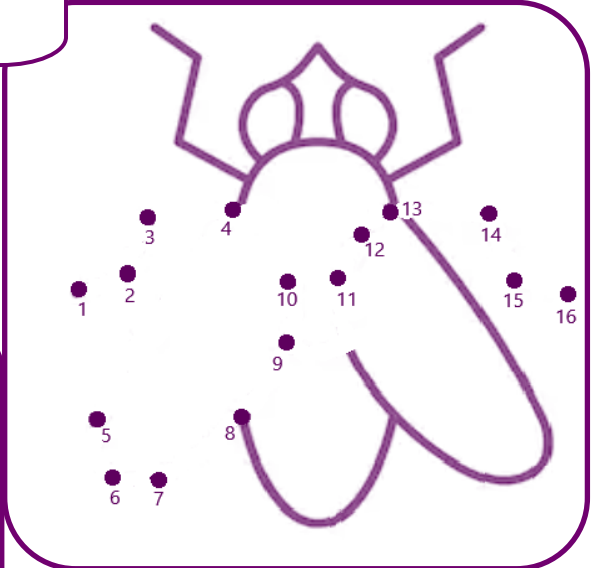
Dojjechi boobi Iiwe kexoochi bi hammemmon tunooni
gettahani sha'e toommochi wodde wuqqa wuuqqa
beeti qooddoch qaabe manoo biina tookki iwee
kexoochi bi hammemmochi echahan.

Doyechina'o qaabe manoona boobina doye kexooche Iiwee
kexoochi boono hammemmi gommon shichona getiyeete.



Iiwee Ariyeecho boobi tiraakomona bi yechoon xiish atto bi daamemoch immiye.nappo bi kocho qayigaata tirakoome biiyon wusho bi qayigaata ebiye beshe wodde irito shaggemo tuneaa aafe dabbi dabbo woyemmo tunooni gettiye

Tiraakoomo aabichi bi bashee beeto gaata Arihote?



Doyechina'o teppena'on 1) tiijjiye yaarena'on dabbimmi haddochi yeshiyoona daniboti. Shichena'o tiraakomo besheebeeti keejje gommina'on bekkiheete

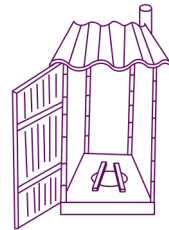
*Iiwee ariyeechi eecha iya'a booyo immahani atto
ikketi baachi bedaache.attoye daakkoona wochi itto
biyyaacheemochi aafona kishononi macho qaawihe*

*Doyechina'ochi yooche badda xallitittino shapphiti doyena'o
beetete. Ikkikkenach gonde doyoo kerona hallo qaawimmi
xallitine doye quyon shichoona daniboti shaahiyoocha duubeti
Fooxe gaachoye xalle Fooxo gaacho*

**Iiwee tuniyaani
doyena'o**



**Iiwee tuneti
doyena'o**

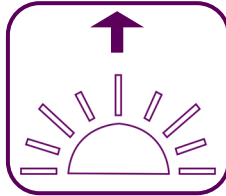
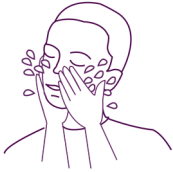


*Iiwe ariyeecho qaabe manooch xalle kishona xalle
aafona beemon ciiniye*

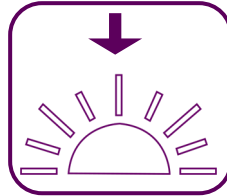
Ne Xalloona Iiwee busho neene. Boobi
Kishona aafononi ame goorochi bi
machedmo gaata geto hakkinne?



Aafo Itto Machedmi gooreena'o



Tokketoche
Itto tiimmona



Tokketooye
Aafi

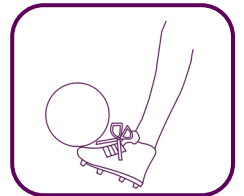
Kisho itto machedmi gooreena'o



Maayo Itto Mamooye
Woye yeshooye aafi



Sheechi
kexooche itto
wottemmona



Kaayooye
gubbi

*Doyechina'och ne qaabe manoo ne tunooni shaahib
kishona aafooni ame goorochi ne machaa beeto
gaata boobich biribi. Ebin bi shalligiyemmochi
gaacemmi ne dojjiyemmi dubo beete?*



*Giisheche qemooye gubbi boobi doyye kexoochi wottehe.
Kishoona aafona xallena'one qaabe manoona guuche
maneenoni bi ciinona Oogetommon emirite.*

*Doyechina'och keejjen Uuchena'o doyye kexooch wotte boono
kaayon shichoona birib. Ciichi kexooch itto hammimona itto
kechi ashena'och kiinooni getoti.*



