

# ANNUAL REPORT

# 2024

Rooted in Prevention





Table of

# Contents

01.

Opening Letter

02.

Call to Action

03.

About NALA

04.

2024 Snapshot

05.

2024 in Numbers

06.

Strategic Pillar 1 - Design

07.

Strategic Pillar 2 - Partner

08.

Strategic Pillar 3- Build Evidence

09.

Strategic Pillar 4- Advocate

10.

Financial Snapshot

11.

Our Partners

12.

2025 and Beyond



# Opening Letter

Dear friends,

It is with great pride and deep personal gratitude that we present NALA's 2024 Annual Report. This past year has been marked by growth, renewed partnerships, and important learning, all grounded in our continued commitment to prevent neglected tropical diseases (NTDs) before they begin.

One of the most meaningful experiences for me this year was traveling to Ethiopia to lead research on the impact of the Multisectoral Coordination intervention. Working closely with the team on the ground, I was struck by their professionalism, responsiveness, and genuine drive to understand the real-world effects of their work. It was a privilege to witness how this approach is improving lives, and I returned home proud of the dedication and clarity our team brings to everything they do.

The theme of this year's report, **Rooted in Prevention**, reflects a core insight that has guided our efforts – sustainable health begins in communities, where long-term solutions are shaped, owned, and sustained. By focusing on hygiene education and behavior change, we are not only addressing the root causes of NTDs, but also supporting communities in protecting their own health. Prevention is not only more cost-effective than treatment, it is also more sustainable. It allows communities to build healthier environments and interrupt cycles of disease in the long term.

In 2024, NALA deepened its commitment to community-centered prevention by helping integrate health education into school curricula, restoring water systems in school compounds, and scaling interventions that prioritize dignity, access, and local ownership. Our focus remains on strengthening systems that will last beyond the lifespan of any single project.

As you read this report, we hope you will see not just data and milestones, but the people and stories behind them. I left Ethiopia with renewed conviction that this work matters, not only in statistics, but in the health, stability, and future of every person it touches.

Thank you to our team, our partners, our funders, and the many community members who make this work possible. I am grateful to be part of this effort and look forward to the year ahead.



Warm regards,

Reut Barak Weekes  
Chair, Board of Directors  
NALA

# Call to Action

*A future free from preventable diseases*

We believe in a world where no one suffers from preventable diseases, where health is a right, not a privilege. A world where communities lead the way, early action is the norm, and no one is left behind.

At NALA, we are committed to turning this vision into reality. We don't just fight diseases of poverty; we advance what lasting health protection looks like in practice. From strategy to delivery, we work to embed this mindset into government routines and everyday systems, not as a temporary intervention but as standard practice. Our goal is to make proactive response possible, applicable, and expected at every level of implementation. From the classroom to the clinic, from policy rooms to villages, we create impact that goes beyond treatment, placing prevention at the core of health systems.

Our work is more than numbers; it's about people. Real stories. Real change. We put faces behind the data, ensuring that every intervention is rooted in human experience. Sustainability, government ownership, and community engagement drive everything we do, because change is only meaningful when it lasts.

Innovation fuels us. Whether it is strengthening disease surveillance, integrating water, sanitation, and hygiene (WASH) into education,

or scaling community-driven solutions, we pursue bold, evidence-based approaches to tackle complex health challenges. We are advancing prevention indicators across WASH and NTD programs and building clear, practical guides that translate research into action. Through our human-centered design approach, we ensure that solutions reflect local needs and priorities, building both relevance and ownership from the ground up.

But we cannot do it alone. Partnerships are the foundation of impact. By working together with governments, organizations, and communities, we amplify change and drive scalable solutions that can transform entire health landscapes. To truly end neglected tropical diseases, we must work together to prioritize prevention not only as a health strategy, but as a foundation for equity, resilience, and long-term change.

The time for action is now.  
Prevention is possible.  
Sustainability is achievable.  
The future is within our reach.

**Join us in building a world where no one has to suffer from preventable diseases.  
Because health is not just about survival;  
it's about the right to thrive.**



NALA Team, Addis Ababa

# About NALA



Imagine that for every five people in the world, one is affected by a disease that is entirely preventable. NTDs impact more than 1.5 billion people, yet they remain one of the most overlooked public health challenges. In many parts of the world, where access to healthcare, clean water, and sanitation is limited, these diseases take a heavy toll. They can lead to severe outcomes, including blindness, chronic malnutrition, disability, and social exclusion, trapping families in poverty. Women and children are often the most affected.

**NALA works to create a world free of preventable diseases that perpetuate the cycle of poverty.**

We are redefining how to fight diseases of poverty by putting prevention first. Instead of waiting to treat infections, we work to stop them before they start. We look at the full transmission cycle, from behavior and environment to system gaps, and co-develop integrated strategies that break the chain of disease. Our approach blends health education, behavior change, vector control, and improved access to WASH. We begin by listening, understanding how people live, what they know, and what stands in their way. Through a human-centered approach, we engage local leadership and cross-sector stakeholders to ensure solutions meet real needs and build lasting ownership. With locally adapted tools, we train teachers, health workers, and government staff, and support communities to design their own solutions. These might include repairing school water points or mapping rivers linked to disease risk. Our goal is not to replace systems but to strengthen them from within. When prevention is practical, affordable, and locally owned, it works and it lasts.

To guide this work, we follow four strategic pillars: designing adaptable prevention models, partnering with governments and communities, building evidence on what works, and advocating for change. These pillars connect our grassroots projects to national and global efforts and help us scale sustainable solutions.

## Our Mission:

Position NALA as the global expert in NTD prevention by leading the shift from treatment to prevention and providing tools and support that become standard practice among Ministries of Health and international partners.

## Our Strategic Pillars:

**Design:** We create adaptable models and tools for disease prevention that can be used in different contexts and scaled by others.

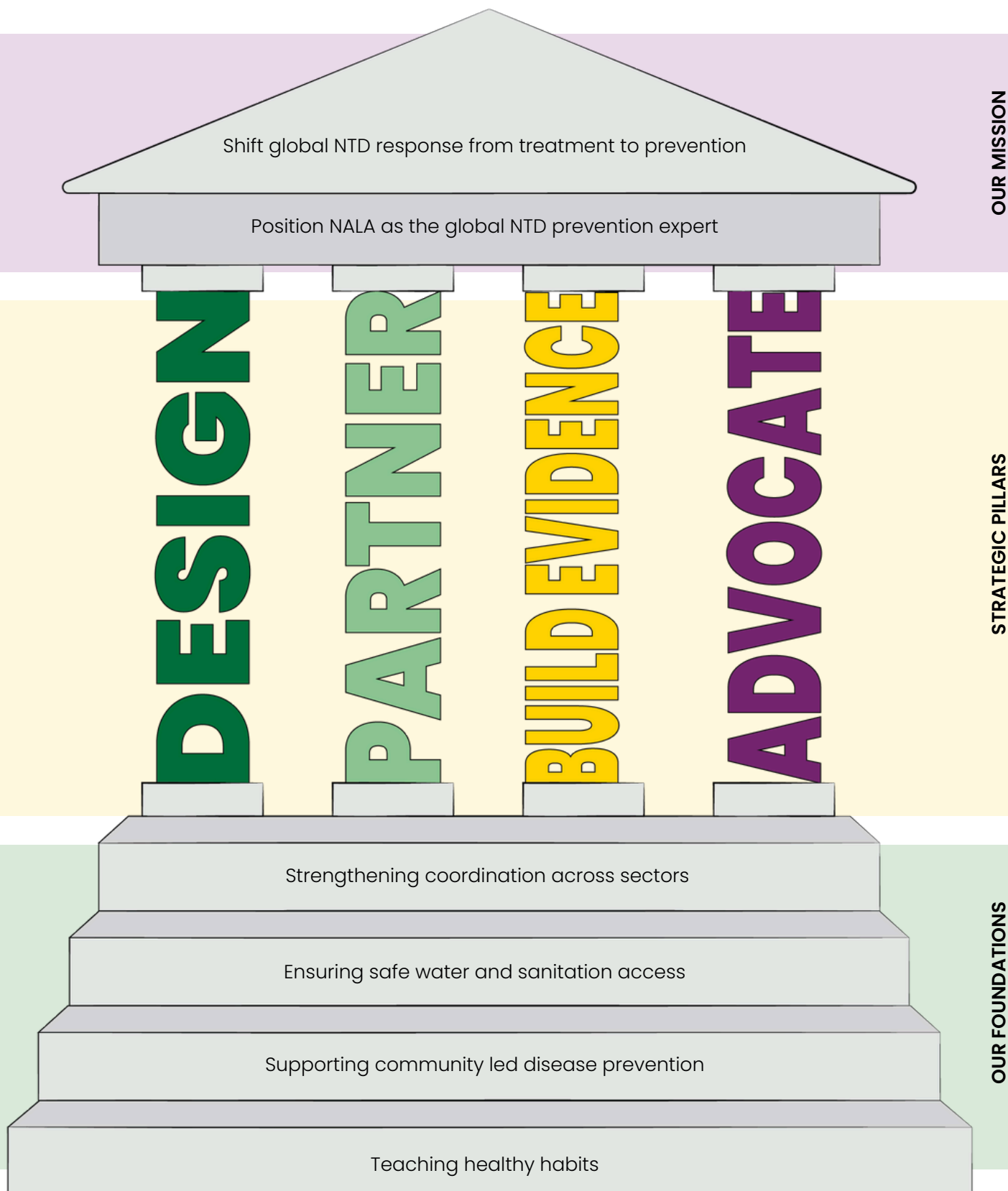
**Partner:** We work closely with governments, communities, and NGOs to integrate prevention into existing systems and ensure long-term impact.

**Build Evidence:** We collect and share data to show what works, why it works, and how it can be replicated or improved.

**Advocate:** We promote prevention as a global health priority by engaging with policymakers, contributing to research, and sharing lessons from the field.

## Our Foundations:

Four foundations anchor NALA's approach, shaping how we work and why it lasts: we connect sectors, strengthen basic services, center communities in every solution, and make healthy habits part of daily life.



# 2024 Snapshot

## January

### Project Relaunch after Years of Conflict

After years of conflict, NALA returned to Adwa to assess the damage and start rebuilding its community health program. A baseline survey revealed that over 32% of students were infected with intestinal parasites, a sharp rise from under 5% when NALA last worked in the area. The findings underscored the urgent need for renewed action.



## March

### Setting the Standard

NALA finalized a minimum package for NTD prevention: a practical, government-approved toolkit with adaptable steps for implementing behavior change and WASH interventions, based on years of field experience from NALA and our partners



## February

### Embedding Impact Through Collaboration

NALA took part in the DIF meeting in Mombasa, where partners from across Africa shared strategies for interrupting disease transmission. NALA also finalized the Accelerate Champions report, highlighting how local government champions can help embed hygiene and sanitation into routine systems.

## May

### Expanding the Map

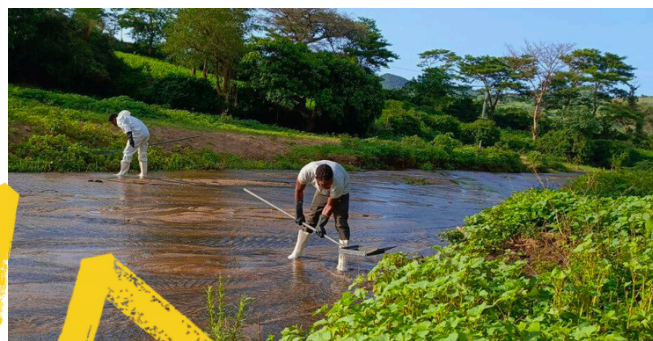
NALA began shaping a new project in Israel focused on vulnerable populations affected by NTDs, while Nisan Zerai Kesete, NALA's Country Director from Ethiopia, joined the global Uniting to Combat NTDs Consultative Forum as NNN representative.



## April

### Prevention on the National Agenda

The Behavior Change Toolkit was formally presented to Ethiopia's National Trachoma Task Force. That same month, the Interruption of Transmission (IoT) project launched to eliminate schistosomiasis and soil-transmitted helminths. Targeting over 700,000 people, the initiative combines treatment, behavior change, and environmental action, with NALA as a key technical partner.



## June

### Local Eyes on Disease

In southwestern Ethiopia, community leaders, teachers, and health workers learned to identify disease-carrying snails in local rivers. Meanwhile, NALA presented its community-driven approach at OLAM's global conference.

# July

Stronger Systems, Stronger Team

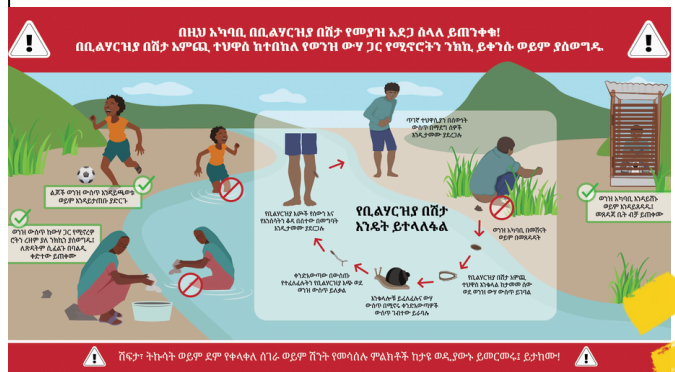
A new M&E platform improved how data is collected, shared, and used across NALA's projects, while the full team came together in Addis Ababa for a week of learning and connection.



# September

Community Action in Motion

In Mizan, local residents created their own plans to reduce schistosomiasis through safer water use and snail control. Teachers, farmers, and health workers worked together to design solutions grounded in daily life.



# August

Human-Centered by Design

NALA teams came together for the Annual Team Meeting to reflect on progress, align on priorities, and plan for the future. For the first time, a human-centered design workshop was included, introducing an approach that has guided NALA's work ever since.

# November

Health in the Hands of Students

NALA finalized classroom materials for the NICE curriculum, embedding disease prevention into daily learning. These tools will equip students to protect their health and become catalysts for change in their families and communities.



# October

From the Field to the World

NALA joined key global conversations on NTDs, sharing insights from the field at conferences and technical forums to advocate for prevention-focused, community-led approaches as essential to sustainable health strategies.

# December

From Training to Global Influence

NALA launched a revamped training for WASH Fellows focused on sustainable school maintenance. The month closed with the election of NALA's Head of Operations, Dorin Brener Turgeman, as Vice-Chair of the NTD NGO Network (NNN), affirming NALA's growing global role.

# 2024 in Numbers



## **ARISE** Designing of a national minimum package for sustainable NTD control

**1** nationally-endorsed SBC + WASH strategy for NTDs (ARISE STEPS package) finalized and approved by MoH

**2,646** students were surveyed across

**257** schools in a baseline assessment

## **IoT** Interrupting transmission of schistosomiasis in low-endemic areas

**963**

Officials trained for MDA campaigns supporting the Ministry of Health

**1 Milion**

individuals reached through social mobilization campaigns and participated in the SCH-STH MDA

## **NICE** Embedding hygiene and disease prevention in regional school curricula

**1** regional curriculum package developed and readied for rollout

**5** Curricular radio programs promoting hygiene and health were developed, validated, and aired five days a week across six zones, reaching schools and homes in rural and remote areas.

## **Adwa** Restoring access to health education and water after disruption

**51** community Health Development Army volunteers trained

**30** religious leaders trained

**10,170** community members reached with hygiene education

## **Snail Mapping**

**20** fresh water sites mapped

**62** community members participated in community action-planning workshop

**18** community snail collectors were trained

Campaigns were implemented at **5** infected water sites

## WoW

Repairing WASH infrastructure and strengthening local technical capacity with mobile technician teams

**29**

schools received maintenance of water infrastructure and improved water access

**19,293**

students received health education on hygiene and disease prevention

**15**

district WASH officers were trained as WASH fellows, gaining deeper technical skills and directly linking them to schools

**86,819**

community members reached with hygiene education

## MSC

Strengthening the government response through coordination of health, WASH, education, and other sectors

**550**

districts reached with the MSC toolkit by end of 2024

**80**

in-depth interviews conducted with Ethiopian government officials as part of the MSC research

**4**

regions supported by regional secondees to sustain MSC rollouts

**230**

government officials from various sectors trained on using the MSC Toolkit

## Contributions in the international arena

As part of a sector-wide effort, NALA contributed to the development of the **NNN Social and Behavior Change Quick Guide**, working alongside partners such as Sightsavers, Unlimit Health, Fred Hollows Foundation, and GSA. The guide offers practical entry points and principles for effective, sustainable behavior change in NTD programs.

NALA was a key technical contributor to the development of **WHO's online course on Multisectoral Coordination** for Health and Well-being, with its tools and approaches reviewed as core references on WASH-NTD collaboration. The course equips national and sub-national actors to work across sectors and align efforts for stronger, more coordinated health outcomes.

Aligning with a global pledge to end NTDs and scale coordinated action, NALA signed **The Kigali Declaration**. This high-level commitment places people and countries at the center of the NTD response. By signing, NALA joins a global movement translating international targets into national strategies.

**13**

Global events, NALA staff shared key lessons and project successes with partners and peers.

**3**

Leadership positions on global working groups: NNN Vice-Chair, WASH WG Co-Chair, GSA Behavior Change & Health Education working group

# Driving Change Through Leadership

## Power in local hands

Strong and committed local leadership is a key success factor in our projects. Trusted by their communities and respected as role models, local leaders have the influence to inspire action and shift norms. A committed school director can motivate teachers, students, and parents, while key community figures can shift public perception and social norms. That's why NALA partners with these leaders, amplifying the messages through their networks to create real, lasting change.



A NALA officer engages a student in health messaging during a school visit.

### In schools:

The ARISE program strengthens leadership at multiple levels, especially within schools. Through a targeted workshop, school principals and selected teachers are equipped with skills to spread health messages, mobilize the school community, and cultivate leadership in others. Principals take the lead in improving school conditions, by advocating to parents to improve infrastructure and ensuring that teachers monitor student hygiene and well-being.

At the same time, trained teachers activate WASH clubs, where students take charge of health messaging and lead small-scale projects that inspire their peers and enhance the school environment.

"The commitment of the school management is key to the sustainability of WASH projects in the school. If there is no commitment, the projects will fail. If the school community and management abandon the project, the change observed among the students will slip."

- PTA member, ARISE assessment in Amhara, Ethiopia



NALA staff and school leaders plan next steps for health messaging and WASH improvements.

### In communities:

From 2015 to 2019, the Adwa project made a powerful impact across all levels of the community, significantly improving health outcomes. However, progress was set back between 2020 and 2022 as the coronavirus pandemic and the Tigray conflict led to school closures, mass displacement, and widespread disruption of health services, which triggered a resurgence in disease. When the Adwa project relaunched, the team was met with a new reality: damaged infrastructure and fractured services. The clearest path forward began with religious leaders, who had maintained community cohesion throughout the crisis. Their trusted voices became the foundation for rekindling community engagement and improving health outcomes once again.

"Before the training, I understood that my own personal hygiene was important, but the training paved the way for me to think about the importance of hygiene and sanitation for all the people in my church. I understand now that I can lead the way in making them healthier."

- Orthodox priest, Adwa project, Ethiopia



A teacher in Adwa delivers a health lesson as schools reopen after years of disruption.

# From Participation to Leadership

## Local actors and assets

At NALA, we believe in the power of partnership. Rather than relying solely on a needs-based approach, we focus on the strengths and assets already present within the community. While we bring our expertise in disease prevention, we recognize that the community is the true expert on their own experiences and the local context. Our approach is human-centered, driven by community participation and action. From defining problems to mobilizing local resources and talent, we work alongside communities to make lasting change from within.



Lab teams test water samples for parasites linked to schistosomiasis.

The Interruption of Transmission (IoT) project is a national initiative led by the Deworming Innovation Fund (DIF) under The END Fund. In 2024, it was implemented across 8 districts in Ethiopia and 46 schools, with NALA serving as the implementing partner for the social-behavior change and vector control component, as well as technical partner for mass drug administration and test and treat activities. The initiative aims to interrupt the transmission of schistosomiasis in areas where infection levels are already low. It is the most intensive initiative NALA has undertaken to date and is built on the belief that real elimination is only possible through a coordinated, community-led effort.

A key innovation this year was the rollout of snail mapping workshops. These were not theoretical trainings. They took place in rivers and streams, where community volunteers learned to identify the aquatic snails that host the parasites responsible for disease transmission. For many participants, this was the first time they saw the direct link between the environment around them and the transmission of disease.



Volunteers take part in snail mapping to track local transmission risks.

*"Following this workshop, I now understand the relationship between snails in the local river and the transmission of schistosomiasis. Additionally, I have obtained a thorough understanding of the snail vector and its morphology."*

— Community volunteer, IoT snail mapping workshop

These workshops shifted awareness into action. Participants developed monitoring plans and shared knowledge with others in their community. This local expertise is becoming the frontline of prevention.

### Community-driven WASH solutions

In parallel, the project focused on repairing water and sanitation infrastructure through NALA's WASH on Wheels model. These mobile teams assessed and restored facilities in schools, working closely with parents and teachers to prioritize needs.

The repairs were only part of the story. Every intervention was matched with local mobilization. Communities contributed labor, fencing materials, and replacement parts. The average contribution was 19,772 Ethiopian Birr (ETB) per school. These were not token amounts and instead they represented shared responsibility and commitment to safer, healthier spaces for children.

"NALA showed us that a dedicated team with professionalism drives lasting change. We are now confident we can manage future maintenance efforts effectively with our own technicians."

- Government representative, Dita Woreda WASH Sector

These efforts are not only restoring infrastructure. They are rebuilding trust and dignity in the school environment.



Our NALA WASH technician, Bikes Molla, trains community members to repair school water and sanitation systems.

# Sustaining Through the Government

Built into the system

## Between sectors: building collaborative platforms

Tackling neglected tropical diseases (NTDs) at scale requires more than one intervention. It requires more than one sector. For Ethiopia to move from disease control to elimination, the systems that deliver water, sanitation, education, and health must work together.

This is the core principle behind NALA's **Multisectoral Coordination (MSC)** model. Developed with the Ministry of Health and now rolled out across more than 550 districts, MSC brings together district-level officials from WASH, Health, Education, Finance, Women and Children's Affairs and Administration. It provides a shared platform and practical toolkit for collaboration, planning, and follow-up. Since 2017, MSC has evolved from a pilot initiative to one of Ethiopia's most recognized platforms for NTD prevention.

"When we work together, for instance in school, the water office constructs the water line, the health creates awareness of its proper utilization and the education office monitors the quality and its sustainability. So, together we can achieve a lot even though our capacity is limited."

— District-level water officer, MSC project, Oromia, Ethiopia



District officials join an MSC session focused on coordinated planning for NTD prevention.

### **Within sectors: embedding change into the classroom**

One of the most significant outcomes of multisectoral coordination in 2024 came from the education sector. In the South West Ethiopia Peoples' Region (SWEPR), where NALA had worked closely with school leaders through MSC and health education programs, the regional government formally requested support to develop a new curriculum focused on disease prevention.

The result was NICE: NTD Integration into Curricula for Education.

The NICE program focuses on equipping schools with the tools to embed hygiene and health messages into everyday teaching. Developed in collaboration with the South West Ethiopia Peoples' Region (SWEPR), the curriculum package supports teachers to deliver accurate, age-appropriate health content across subjects, not as an add-on but as part of how children learn.

In 2024, NALA helped establish a committee of local health and education experts to identify content gaps and shape context-specific materials. Five engaging messages on hygiene and sanitation were translated, recorded, and broadcast on regional radio five days a week, reaching classrooms and homes across the six zones where NALA is active. By the end of the year, the regional curriculum package was finalized and prepared for rollout, with the goal of turning early education into a foundation for lifelong habits.

NICE is still in progress, but its development is a powerful example of how intersectoral collaboration can lead to structural reform within a single system, embedding prevention at the heart of education.



A student practices daily handwashing at school, reinforcing hygiene habits promoted through the NICE curriculum.

# Evidence of Impact

*Listening, learning, improving*

In 2024, Dr. Reut Barak Weekes, Chair of NALA's Board of Directors, led a national study in collaboration with Mr. Geordie Woods (Sightsavers) and with the support of Tel Aviv University and the Hebrew University of Jerusalem. The research assessed how widely the MSC toolkit had been implemented in Ethiopia and what outcomes it contributed to. The study combined in-depth interviews with government officials across all governance levels (80 in total, conducted in local languages) and analysis of Ministry of Health data to explore links between MSC and access to WASH services.

## Key findings:

- **Greater awareness of WASH-NTD links:**  
In districts where the toolkit was implemented, government officials (focals) showed significantly improved understanding of how WASH access influences NTD burden.
- **Reported impact on disease burden:**  
Many focals reported that MSC contributed directly to NTD reduction in their districts.
- **Drivers of success and barriers to scale**

### Outcomes

- Targeted WASH investments using NTD criteria
- Integration of WASH-NTD and health education
- Improved institutional coordination and capacity
- Enhanced efficiency among district-level actors

### Barriers to sustainability

- Staff and technical turnover
- Limited external funding
- Weak monitoring practices
- Inconsistent leadership or lack of prior MSC familiarity



# Scaling What Works

## Fikre Seife joins the team to lead NALA's global vision

NALA's ambition to scale effective, prevention-first strategies beyond Ethiopia is taking shape through PRISM: our new Center of Excellence focused on Practice, Research, Innovation, Sustainability, and Monitoring. Developed in partnership with Merck and The END Fund, PRISM supports governments and partners to adopt, adapt, and scale what works. By combining technical guidance, research, and field-tested tools, PRISM aims to accelerate disease elimination efforts across multiple countries.

To lead this bold initiative, NALA welcomed Fikre Seife, whose life and career reflect the heart of our mission.

Fikre Seife's story is one of deep personal commitment and transformative change. Born and raised about 300 kilometers north of Ethiopia's capital, Addis Ababa, Fikre grew up in a community profoundly affected by neglected tropical diseases like trachoma and soil-transmitted helminths.

"As a child, I experienced these diseases firsthand, missing months of school due to illness. I recall the cycle of getting sick, staying home, and returning to school, only to fall ill again. It was a reality shared by my family, friends, and nearly everyone in our community, yet at the time, we didn't know that medical help was available."

This personal experience fueled Fikre's determination to pursue a career in public health. He wanted to ensure that others wouldn't have to endure the same struggles he faced. After years of dedicated service at the Ethiopian Ministry of Health, where he worked to improve health outcomes, Fikre sought a broader platform for sustainable change and found that in PRISM's mission to scale practical, prevention-led approaches globally. He joined NALA, inspired by our commitment to innovative, collaborative solutions.



Fikre Seife leads NALA's global prevention work through PRISM.

With Fikre at the helm, PRISM is turning lived experience into global impact. His leadership is helping shape a model that is not only technically sound but grounded in the realities of the communities it serves.



# Raising the Bar on Disease Prevention

## NALA's contributions

NALA is reshaping the global response to NTDs by putting prevention at the center. With deep operational experience, growing influence in policy spaces, and a firm commitment to research and innovation, NALA is setting new standards for what effective, scalable, and community-led prevention can look like.

In 2024, NALA's leadership in the global NTD space reached new heights. Our Head of Operations, Dorin Brener Turgeman, was appointed Vice-Chair of the NTD NGO Network (NNN), the world's leading coordination platform for NTD actors. In 2025, she will lead the NNN Annual Conference in Uganda, bringing together hundreds of NGO executives, ministries of health, WHO representatives, and donors. As she steps into the role of Chair in 2025, her leadership will help set global direction and ensure that prevention-focused, community-led models are at the forefront of global strategy.

At the heart of NALA's strategy is a belief in the power of research and innovation to drive meaningful change. In 2024, we welcomed Dr. Noa Dahan to lead our research and evidence efforts. With a strong background in parasitology and a passion for translating science into action, she is guiding the development of rigorous research that strengthens program design, informs national policy, and ensures our prevention model remains impactful and scalable. Her leadership reflects NALA's commitment to grounding every intervention in data, insight, and continuous learning while advancing the vision to build a center of excellence in NTD prevention research.

*"At NALA, research is not just about generating data, it's about listening deeply and acting boldly," says Dr. Dahan.*

*"In the years ahead, we're committed to working hand-in-hand with communities to turn local insight into models for NTD prevention that are as scalable as they are rooted in lived realities"*



As a member of Uniting to Combat NTDs, Nisan Zerai Kesse

In addition to these leadership milestones, NALA also made its mark across global platforms and strategic roles throughout the year:

#### Global Networks and Working Groups:

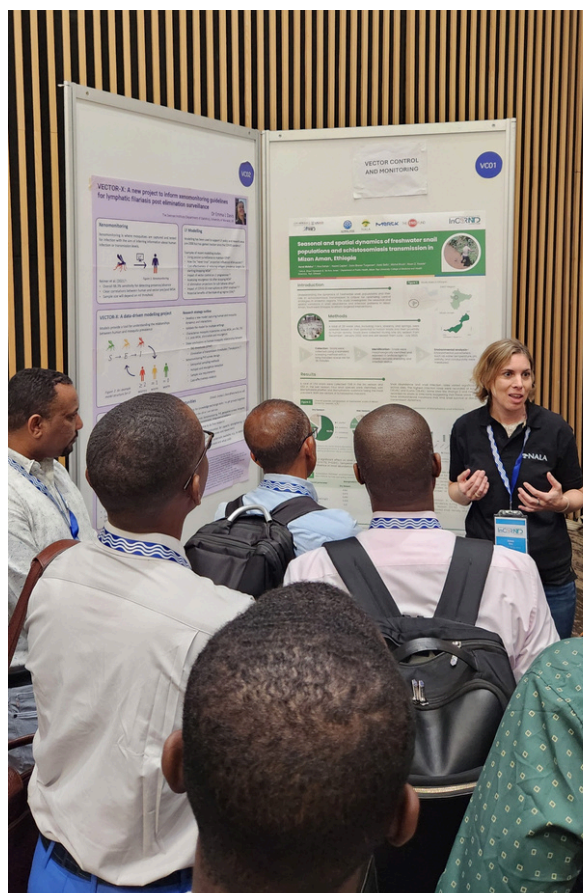
- Co-Chair, Global Schistosomiasis Alliance (GSA) Behavior Change and Health Education Working Group - **Naomi Caplan**, Head of Learning
- Co-Chair, NNN WASH Working Group - **Fikre Seife**, PRISM Program Manager
- Member, Uniting to Combat NTDs - **Nisan Zerai Kesete**, Ethiopia Country Director



Dorin Brener Turgeman, NNN Vice Chair



te contributes to shaping global coordination efforts.



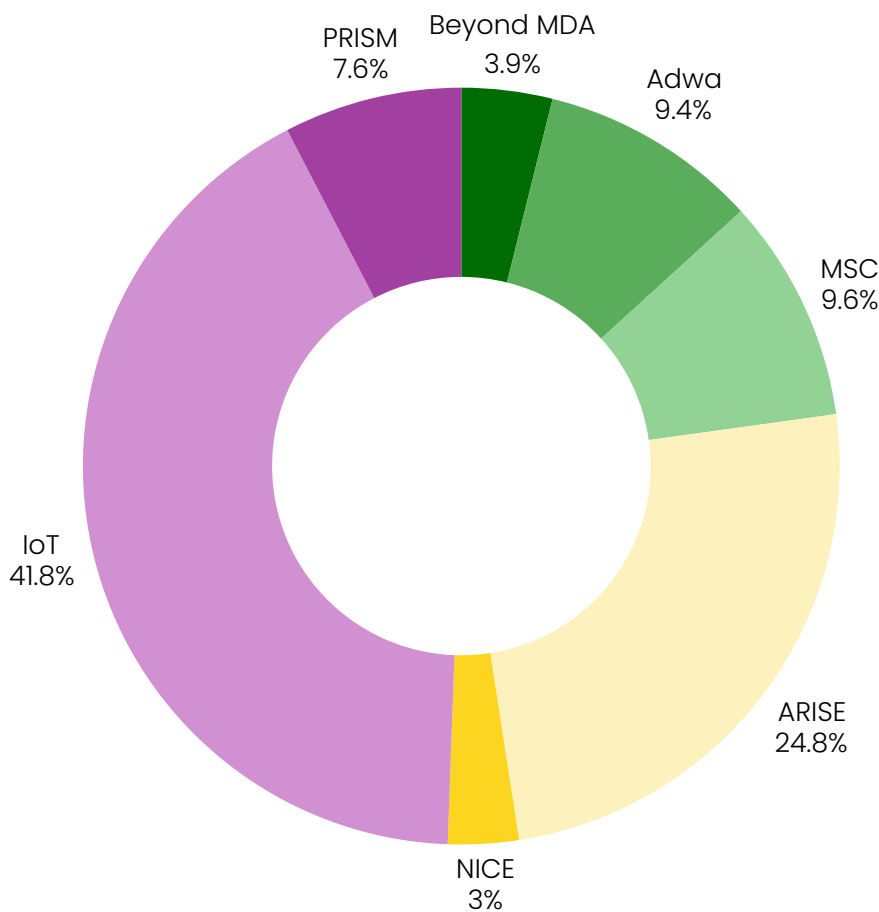
Dr. Noa Dahan shares field insights with international peers at a global forum.

# Financial Snapshot



Following our trajectory of growth over the last decade, 2024 saw both an increase in projects and total funding. NALA's income grew from \$1.9 million in 2022 to \$2.1 million in 2023, reaching \$2.5 million in 2024 alongside an expansion in projects and partnerships.

4.8% of funding goes to overhead costs. The remainder is directly spent on projects.



- ARISE** - Designing a national minimum package for sustainable NTD control in Ethiopia
- IoT** - Interrupting transmission of schistosomiasis and reducing other intestinal parasites in low-endemic areas
- NICE** - Embedding hygiene and disease prevention in regional school curricula
- Adwa** - Restoring access to health education and water after disruption
- Wow** - Repairing WASH infrastructure and strengthening local technical capacity with mobile technician teams
- Multisectoral Coordination (MSC)** - Strengthening the government response through coordination of health, WASH, education, and other sectors
- PRISM** - Supporting governments and global actors to scale evidence-based prevention
- Beyond MDA** - Expanding deworming programs through improved tools for community mobilization and treatment delivery

# United by Partnership Guided by a Shared Vision



"Alone we can do so little; together we can do so much."

- Helen Keller

At NALA, partnership and collaboration lie at the heart of our mission. We are deeply thankful for the generous donations and steadfast support that allow us to work alongside communities in creating lasting change. The same values that guide our work in the field shape the partnerships that make it all possible.

## Here's to those who made 2024 happen:

### Board of Directors

NALA's Board of Directors is a force to be reckoned with. From Israel to the UK, Ethiopia, and the US, our board members bring a rich mix of expertise in public health, law, anthropology, banking, and more. Under the guidance of Dr. Reut Barak Weekes, they offer invaluable insights that help steer NALA through both challenges and opportunities. Their dedication is key to our progress, and we are incredibly thankful for their unwavering support and strategic vision.



The Ethiopian Ministry of Health continues to be a cornerstone of our work, offering invaluable guidance and collaboration that make every project possible. Their expertise and commitment to public health ensure that our efforts are not only impactful but sustainable and far-reaching, touching every corner of Ethiopia. We're excited for what lies ahead, knowing that our shared vision and partnership will drive even more meaningful progress in tackling neglected tropical diseases across Ethiopia.



The Pears Foundation has been part of NALA's story from day one, fueling our growth with core support and the kind of flexibility that sparks real innovation. Their backing has helped us test, learn, and share what works. A huge thank you to Sir Trevor Pears and Dina Gidron for walking this path with us, year after year.



With The END Fund, it is never business as usual. This partnership has opened doors to bigger ideas, greater reach, and sharper strategy. Together, we have launched ambitious projects that cross borders, rooted in NALA's on-the-ground experience. As we look ahead, we are ready for bold moves and deeper impact, with prevention placed firmly at the center of breaking the cycle of NTDs.



Seven years into our collaboration, Merck remains a vital partner in both vision and action. Together, we have built a strong foundation through our joint work in Southern Ethiopia, significantly reducing disease prevalence and laying the groundwork for long-term change. With Phase III now underway in the Bench Maji Zone, 2025 is shaping up to be a pivotal chapter in our shared goal of sustained elimination.

### Margalit

With the generous support of Oren and the Margalit Family, 2024 marked the launch of our Israel project. What began as a challenge to bring neglected diseases into the national conversation has quickly evolved into a structured effort, with strong partnerships, growing awareness, and a clear plan forward. With this foundation in place, 2025 promises to be a year of real progress in improving diagnosis and treatment for NTDs in Israel.

# 2025 and Beyond

## **Outlook 2025: Redefining Prevention, Together**

In 2025, NALA stands at the intersection of innovation and impact, carrying forward a bold mission: to prevent neglected tropical diseases before they begin. With each passing year, our approach grows more refined, our reach more global, and our conviction stronger. True transformation lies not in treating illness after it appears, but in designing systems that stop it in its tracks.

## **Rooted in Reality, Reaching for More**

In Israel, where NALA's story began, the Israel NTD Initiative is reshaping healthcare from within. Working alongside partners like Laniado Hospital, we are advocating for the integration of advanced diagnostics and improvement of clinical pathways to ensure that no infection is missed and no patient is overlooked. The data speaks volumes: over 65 percent of at-risk patients tested were found positive for parasitic infections. These numbers fuel our urgency. But beyond the data, it is the personal stories that matter most: families once burdened by chronic illness now gaining strength through early detection and timely care.

## **PRISM: Global Prevention in Motion**

Beyond national borders, our PRISM Center of Excellence is extending NALA's impact and contributing to new thinking around NTDs. Prevention, once an afterthought, is moving to the center. Through PRISM, we are creating a living network where research meets practice and where global learning becomes local action.

With partners including Merck, The END Fund, and community organizations, PRISM is expanding the global prevention toolkit. Whether through sanitation efforts, education models, or multisectoral policy engagement, PRISM is setting a new standard: prevention that is practical, scalable, and built to last.

## **The Road Ahead: Partnership, Purpose, Progress**

As we step into this next chapter, we invite our partners, peers, and communities to continue walking with us. 2025 will be a year of action, turning strategies into systems and pilots into programs. Our goal is clear: to make prevention the norm, not the exception.



At its heart, NALA's vision remains simple and urgent: a world where no one suffers from a preventable disease.

**Let us move forward with clarity, commitment,  
and in partnership.**



